

Extensions Sociable scheme

EXTENSION 1

'THIS SPACE IS A REVELATION'

Swapping a dated kitchen and dining room for a modern layout has transformed Jayne and Andrew Topp's lives

AFTER



← CLASSIC SCHEME

To keep the new kitchen feeling as bright as possible, Jayne opted for pale grey units and polished floor tiles

→ NEW OUTLOOK

French doors open up the views of the mature rear garden on both sides of the spacious extension



BEFORE



EXTENSION DETAILS

HOMEOWNERS

Jayne Topp, a stay-at-home mum, and husband Andrew, a project manager

FAMILY James, 15, and Josh, 13

LOCATION Wakefield, West Yorkshire

PROPERTY Detached, four-bed Seventies house

COST OF NEW EXTENSION

Build cost £28,300

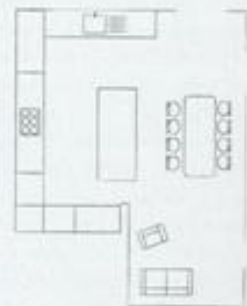
Kitchen (including installation) £12,420

Worktops £6,182

Appliances £4,231

Floor tiles (including installation) £3,657

TOTAL **£54,790**



SIZE OF ROOM L7.35xW5.45m



STYLING TIP

Integrate downlights into glass-fronted cabinets to showcase stylish tableware and create atmospheric illumination

PROJECT BRIEF

To extend the ground floor to create a spacious kitchen, dining- and living-room, with French doors leading out to the garden

Looking round their neighbour's newly completed extension for the first time gave Jayne and Andrew Topp the push they needed to start their own redesign project. 'We had such a wow-factor moment when we walked in there,' explains Jayne. 'It made us realise what a fantastic space we could create in our home, too.'

Although they had previously added a small extension to create an informal dining area connected to the kitchen, the layout was no longer practical for their needs. 'Our teenage boys had outgrown the space,' says Jayne, and the Toppes rarely used the larger, separate dining room at the front of the house, except for on Christmas Day.

The couple had a specific goal in mind: 'Our brief to the architect was to create a multifunctional family area at the rear of the house that would

also open up the views of the back garden and surrounding countryside,' Jayne says. The proposed design included extending the existing kitchen and adjoining dining space by four metres to create a free-flowing room with a large island unit, 10-seater table and a comfy sofa, with French doors leading out to the garden. The separate dining room would then be turned into a den for the boys.

With planning permission approved, the couple had no hesitation when it came to hiring the contractor for the work, JL Bardon Builders, which had completed next door's project. 'We'd watched the team on site every day and saw how hardworking and conscientious they were,' she recalls. 'We knew they'd do a fantastic job.'

Keen to finalise the design of the kitchen before the major building work started, Jayne focused on selecting the new units and worktops. While •



GOOD IDEA
Team white quartz worksurfaces with a full-height splashback for a practical layout

searching online for a fairly timeless style that would set the tone for the light, elegant scheme she wanted to create, Jayne came across a pale grey Shaker-style design by Second Nature that she felt would be a perfect fit. 'I called my nearest stockist – local company Inline Kitchens – and went and looked at the Fitzroy range in its showroom,' she says. 'Not only did I love the design, I felt comfortable with the company from that very first meeting – it seemed like nothing was too much trouble.'

The layout of the Topps' new kitchen is centred around a large island unit, which also doubles up as practical work surface and an atmospherically illuminated, stylish display cabinet for Jayne's elegant tableware. Other key design features include the full-height splashback – made from

the same material as the worktops to ensure a seamless finish that's easy to keep clean – and marble-effect floor tiles that were not only chosen to complement the colour of the other surfaces but also to help bounce light around the room.

'Since completing the extension, we've all been enjoying using the space together,' says Jayne. 'The boys have even volunteered to help with the cooking, which has been a revelation.' And for anyone else looking to take on a similar project, she advises the importance of keeping that end goal in mind: 'When you're in the middle of the building work it can feel as if you'll never be finished and you'll question if it's worth all the upheaval,' she says. 'But sitting here in our dream kitchen-diner, I can honestly say it's more than worth it in the end.'

↑ CLEAN LINES

There's plenty of food preparation space on the uncluttered central island unit

✓ MODERN FEEL

Matching single ovens are teamed with an induction hob for a contemporary look

STOCKISTS
Turn to p103



Shopping list

KITCHEN Second Nature Fitzroy units in partridge grey, £12,420. Quartz worksurfaces in snowfall, £6,182. all Inline Kitchens **APPLIANCES** Neff fully integrated S51L58X0GB dishwasher; Neff Slide & Hide B47C534NOB single ovens; Neff 80cm black glass T41D82X2 induction hob; Hotpoint built-in H53022VL fridge and HUZ3022NF1 freezer; Caple dual-zone wine cabinet; Elica ELB802MM extractor, £4,231 for this complete combination, all Inline Kitchens **FLOORING** Carrera white 60x60cm polished porcelain floor tiles, £33.32 per sqm, Castle Ceramics and Stone **FURNITURE** Torino large extending table, £559.99; Italia dining chairs in grey, £89.99 each, House of Oak. **LIGHTING** Venetian five-light chandelier, £180, Next Home